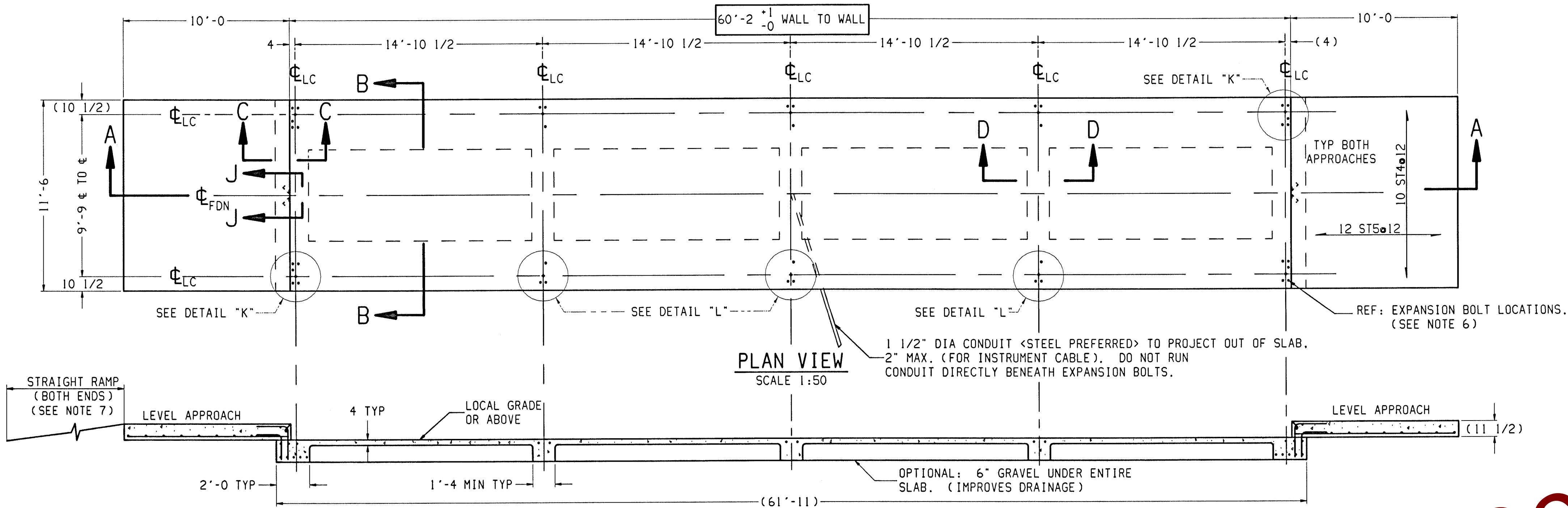
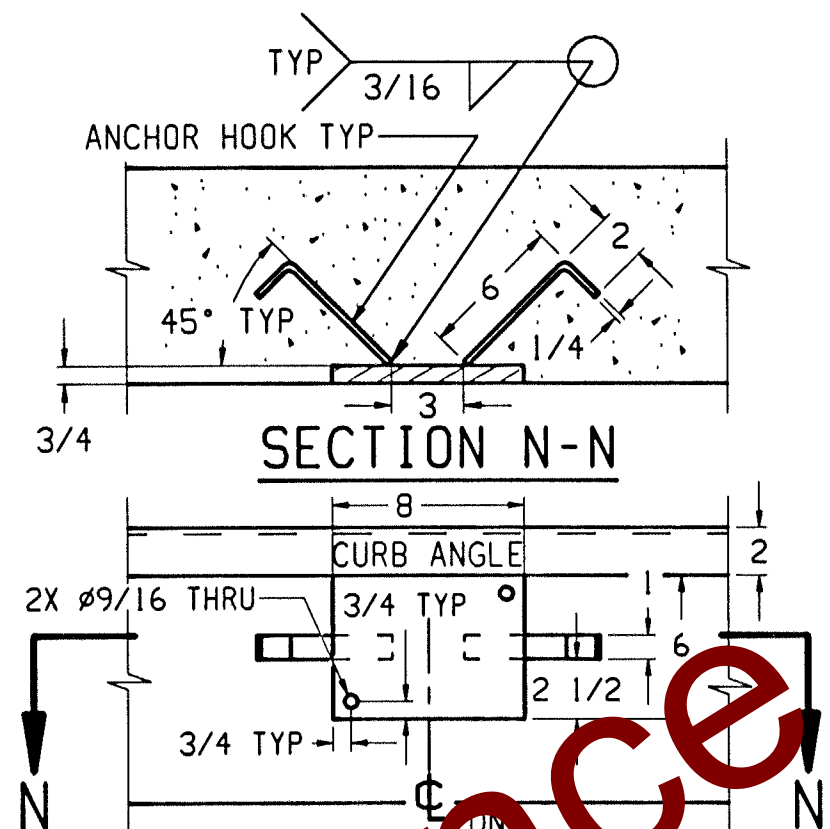


REINFORCING STEEL SCHEDULE (A.S.T.M. A-615 GRADE 60)						
COLD FORM BARS TO INSIDE DIMENSIONS			A			
			B			
SYM	QTY	SIZE	LOCATION, DIRECTION	A	B	WGT
ST1	24	#6	FLOOR BEAMS, LONG.	34'-0"		1227
ST2	24	#6	FLOOR BEAMS, LONG.	30'-0"		1081
ST3	10	#6	END FOOTERS, LATERAL	11'-0"		165
ST4	10		ENDS, LATERAL			115
	20	#5	APPROACHES, LATERAL	11'-0"		230
	6		FOOTERS, LATERAL			92
ST5	24	#5	APPROACHES, LONG.	9'-6"		238
L1	24	#5	APPROACH TO END TIES	2'-0"	2'-0"	101
L2	24	#5	APPROACH TO END TIES	1'-6"	1'-6"	76



PLAN VIEW  
SCALE 1:50

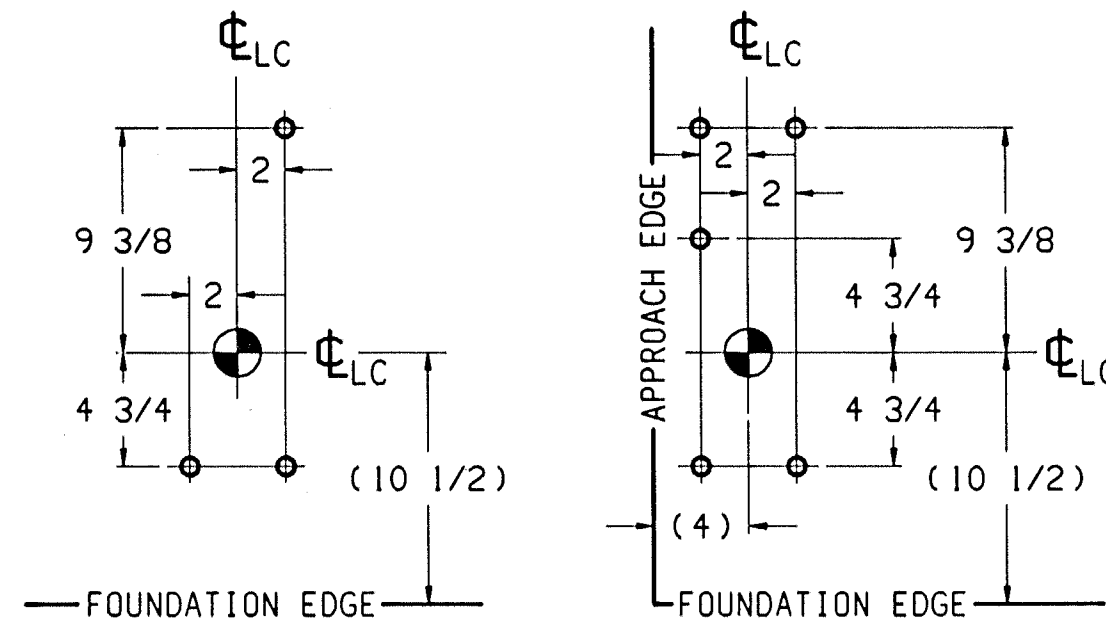
ELEVATION A-A  
SCALE 1:50



SECTION N-N

VIEW J-J

BUMPER PLATE ASSEMBLY: ONE EACH END.  
MATERIAL: 1/2" THK. STEEL. (BY OTHERS).

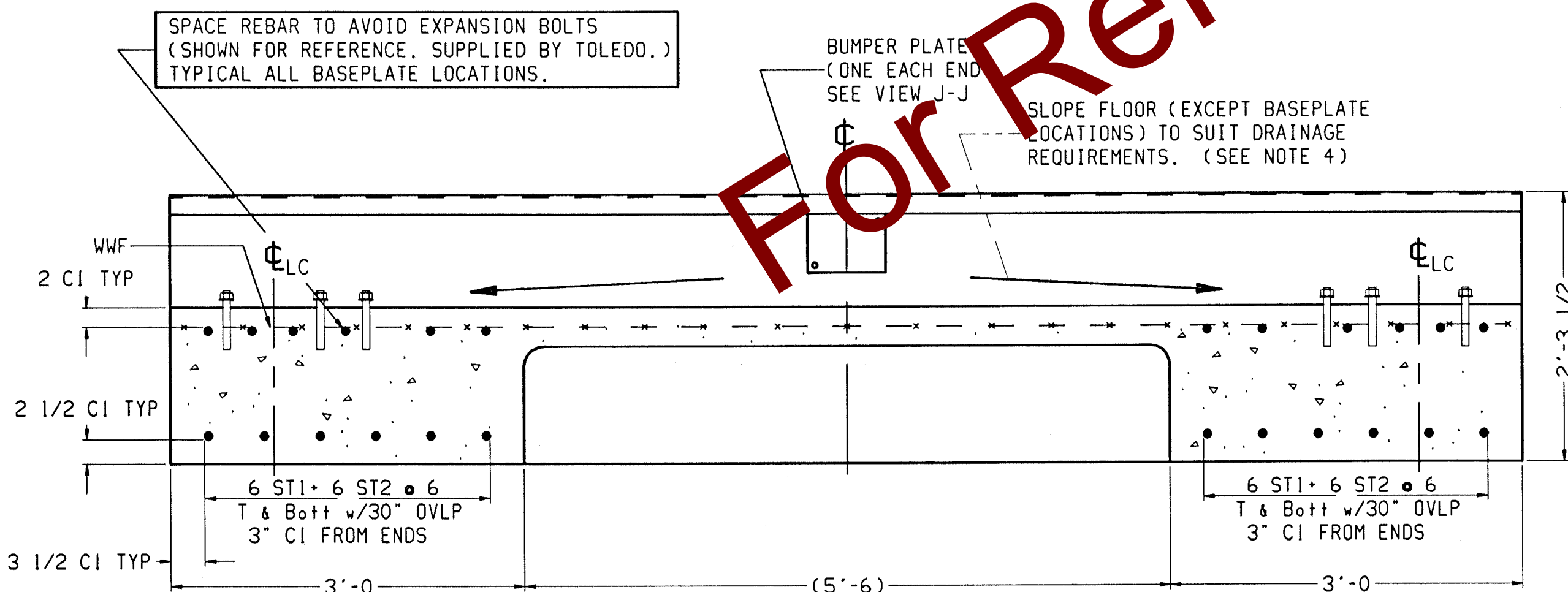


DETAIL "L"

SCALE: 1:8  
EXPANSION BOLT LOCATIONS  
(OTHER SIDE IS OPPOSITE)

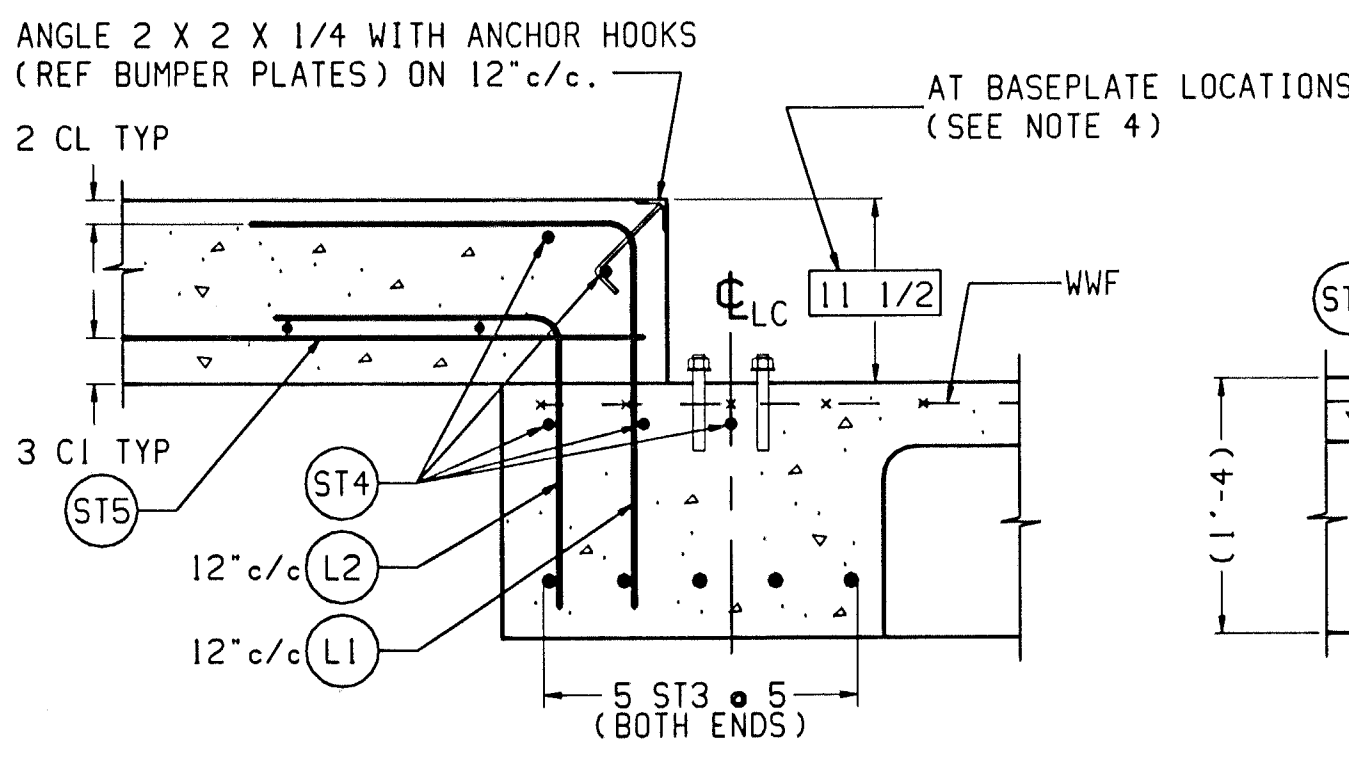
DETAIL "K"

SCALE: 1:8  
EXPANSION BOLT LOCATIONS  
(OTHER SIDE IS OPPOSITE)



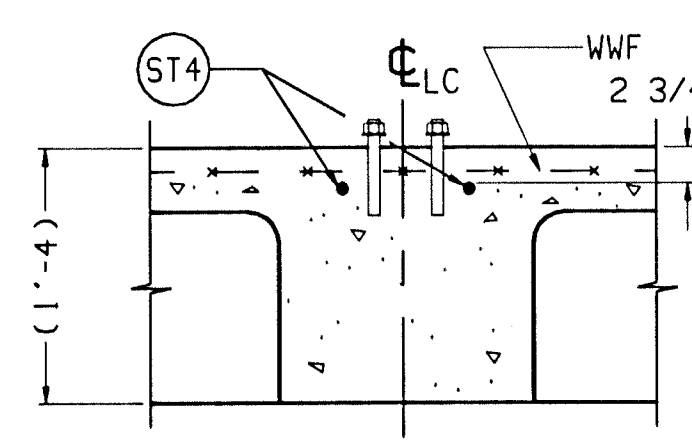
SECTION B-B

SCALE 1:12



SECTION C-C

SCALE 1:12  
(TYPICAL END WALL)



SECTION D-D

SCALE 1:12  
(TYPICAL FOOTER)  
SINGLE BASEPLATE

MATERIAL SUMMARY *	
CONCRETE (CU. YDS.)	33
REINFORCING STEEL (LBS)	3325
WWF: 6x6-W1.4xW1.4 (SQ. FT.)	690

\* QUANTITIES GIVEN ARE FOR FOUNDATION ONLY.  
IF CONCRETE PLATFORMS ARE USED, REFER TO  
GENERAL LAYOUT DRAWING FOR DECK CONCRETE  
AND REINFORCING STEEL QUANTITIES & SPECS.

#### NOTES:

- 1) USE MINIMUM 3000 PSI STRENGTH CONCRETE AT 28 DAYS WITH 5-7% AIR ENTRAINMENT.
- 2) USE MINIMUM 60KSI YIELD DEFORMED REINFORCING STEEL.
- 3) FOUNDATION REQUIRES 1500 PSF RATED SOIL.
- 4) TOP OF CONCRETE AT BASEPLATE LOCATIONS TO BE LEVEL AND IN ONE PLANE  $\pm 1/8"$ .
- 5) DIAGONAL MEASUREMENTS ENDWALL TO ENDWALL MUST BE EQUAL WITHIN  $1/2"$ .
- 6) BASEPLATE ANCHORS TO BE  $3/4"$  DIA. EXPANSION BOLTS X 6" LG. SUPPLIED BY TOLEDO. USE BASEPLATES AS TEMPLATES TO LOCATE EXPANSION BOLTS DURING SCALE INSTALLATION.
- 7) RAMP LENGTH: -PER LOCAL REGULATIONS  
- $1/2"$  SLOPE PER FOOT TYPICAL
- 8) CONTRACTOR SUPPLIES:
  - EXCAVATION
  - REINFORCING STEEL
  - CURB ANGLE ASSEMBLIES (SECT C-C)
  - CONCRETE AND FORMS
  - $1 1/2"$  Ø STEEL CONDUIT
  - BUMPER PLATE ASSEMBLIES (VIEWS J-J & N-N)

MARK	REVISION	BY	DATE	TOLEDO	METTLER - TOLEDO, INC.
A	SHORTENED APPROACHES. REVISED REBAR SCHEDULE	ALS	7-15-91		HEAVY CAPACITY PRODUCTS
B	CORRECTED SECT B-B; ADDED CL NOTES SECT C-C	TDA	2-19-92	SCALE: NOTED	TOLERANCE UNLESS OTHERWISE NOTED FRACT $\pm 1/32$ DECIMAL $\pm .020$ XXX $\pm .005$
				DATE: 3/11/91	DRAWN BY: TDA APPROVED BY:
				TITLE: 7560A/B FOUNDATION: BEAM SLAB 60'x11'	
				This print is furnished with the understanding that the essence thereof will not be reproduced in whole or in part without the written authorization of Mettler-Toledo, Inc. All designs are the property of Mettler-Toledo, Inc. and will be protected by patents.	
				DRAWING NUMBER: TC201563 B	